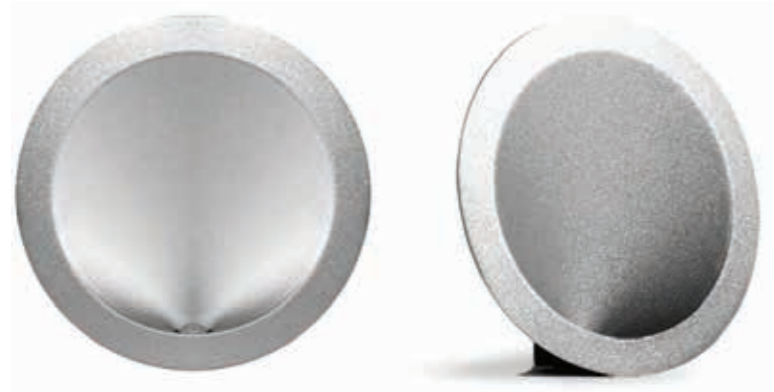
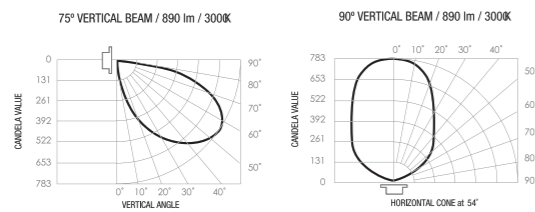


W900 Curve LED wall light

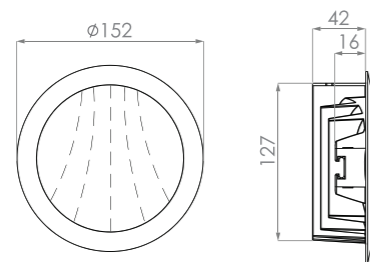


| | | | | |
|--------------------|-----------------------------------|--------------------------------------------------------------------------------------------------------|--------------------------------------------------------------------------------|----------------------------------------------------------------|
| Electrical: | Circuit Wattage: 16W | Delivered Light Efficacy: 56lm/W | Dimming: Phase Dimming (Standard) DALI (special order) | Longevity: L70 B10 = 70,000 Hrs L50 = 110,000 Hrs |
| Optical: | Delivered Lumens: 900lm | Colour Temperature: 3000K (3K) 2700K (2.7K) (special order) 5000K (5K) (special order) | Beam Angle: 90/75° | Tru-Colour: Yes |
| Physical: | Hole Cutout: 135mm | Gimbal Angle: N/A | Warranty: 7 years of luminaire warranty & 5 years of driver warranty | IP Rating: IP43 |
| | Type: Wall light | Body Colour: N/A | Fascia Colour: ○ White (W) ● Silver (S) | Fascia Style: N/A |

Photometrics:



Dimensions:



| | | | | | | | |
|----------------------------|---------------------|---------------|---------------------|-------------------|----------------------|--------------------|-------------------------|
| Specifying Product: | Product Name | Family | Colour Temp. | Beam Angle | Fascia Colour | Version No. | Eg. Product Code |
| | W900 | CR | 3K | 90/75° | White Silver | 1.5 | W900-CR-3K-90.75-W-1.5 |



• Available in white and silver, the versatile W900 Curve lends itself to every area of the home, as orientation, wash or feature lighting. Try mounting the W900 facing upwards 2100mm from the floor for an ambient wash of light on the ceiling.